



*Optical and Sun*  
**COLLECTIONS**

**R A D L E Y**  
L O N D O N



*Radley is based on a simple truth: that real beauty starts on the inside.*

*Beauty.*

*Function.*

*It is individual.  
It lasts.*

*Style.*

*Substance.*

### ***Our Brand***

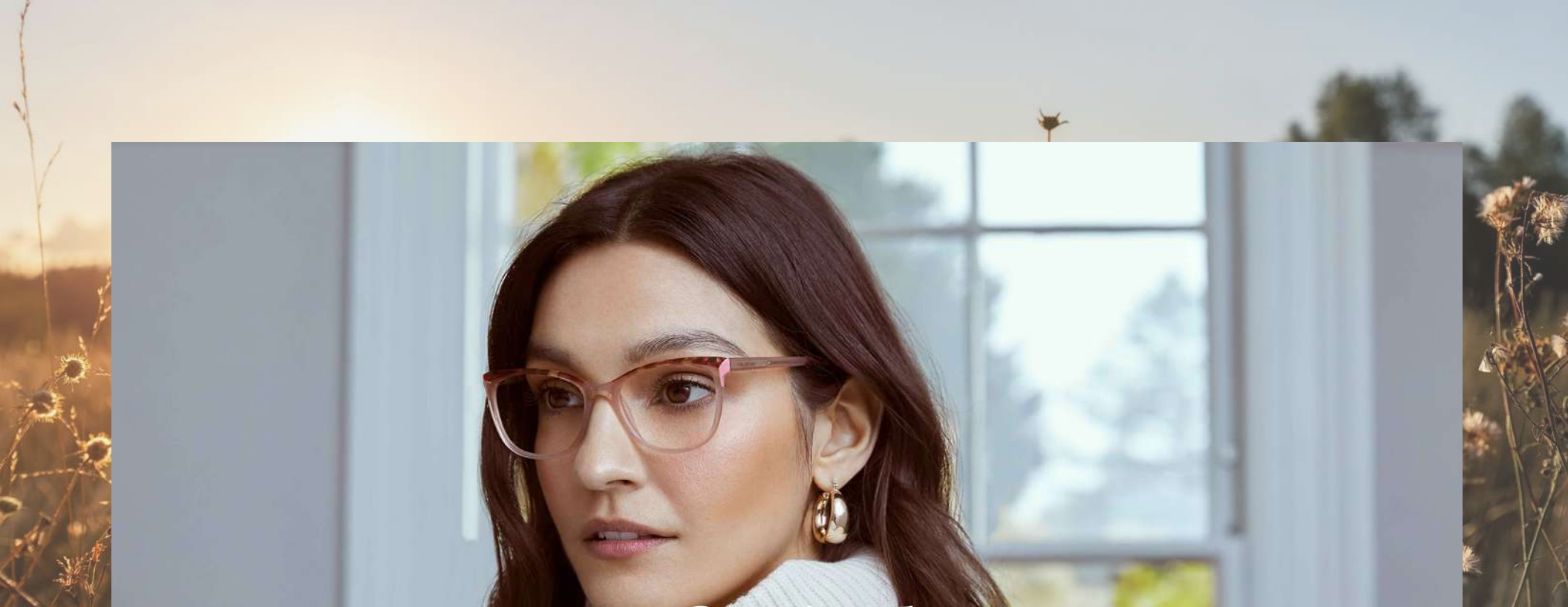
Born in the heart of London more than twenty years ago, Radley has firmly cemented itself as a true leader in British handbags and accessories.

Radley's approach is simple: to create the perfect combination of style and functionality. To achieve this we blend creative design, quality materials and immaculate craftsmanship, with plenty of personality to finish. We pride ourselves in our unwavering attention to detail, style and quality which has always been an essential part of our brand DNA.

Radley has always been a brand that designs for women who live life on their own terms, with the passion and drive to make things happen. At Radley we love confident, free thinking women who embody our values. Women of spirit and substance.

### ***Eyewear Details***

- ✦ A collection of feminine optical and sun frames in bold colors and playful prints inspired by Radley's accessories palette
- ✦ Simply striking
- ✦ Perfectly polished
- ✦ Neat lines
- ✦ Flattering silhouettes
- ✦ Leather texture and handmade acetate
- ✦ Clasp-inspired embellishments
- ✦ Fully RX'able
- ✦ 100% UVA+B protection



*Optical*  
**COLLECTION**

ALI..... 4

CALICO..... 5

DANIA..... 6

ESME..... 7

HENRIETTA..... 8

JAENA..... 9

JANELLA..... 10

JANUARY..... 11

KADY..... 12

KAROLINA..... 13

KEZIA..... 14

MARCIE..... 15

MARGARET..... 16

PORTIA..... 17

ROBYN..... 18

ROMI..... 19

VANESSA..... 20

YOLANDE..... 21

# ALI

STRIKE AN ELEGANT POSE WITH THIS SUPER SLIM STYLE, LIGHT BUT FULL OF CHARACTER.

---



- Flat sheet metal front
  - Hand crafted acetate temples
  - Full frame
  - Base curve: 4.5
- 

52 - 16 - 140 b: 38



ALI - 207

Spruce teal / Rose gold / Pink tort



ALI - 261

Gloss navy / Rose gold / Blue tort



ALI - 272

Shiny rose gold / Sangria / Burgundy tort

# CALICO

STEP OUT IN STYLE – CHOOSE A FASHIONABLE DEEPER FRAME DESIGN LIT UP BY DELICATE FLASHES OF METALLIC DETAILING.

---



- Handmade acetate front with metal brow bar
  - Metal temples
  - Full frame
  - Base curve: 4.5
- 

52 - 17 - 135 b: 40



CALICO - 107

Gloss green horn / Matte rose gold



CALICO - 108

Matte crystal grey / Shiny gunmetal



CALICO - 162

Gloss Sangria tort / Gold

# DANIA

THIS FLATTERING ROUND EYE SILHOUETTE HAS SUPER FINE TEMPLES AND A DASH OF PLAYFUL PATTERNING.

---



- Metal and acetate front
  - Hand crafted acetate temples
  - Round eye supra frame
  - Base curve: 4.5
- 

51 - 20 - 140 b: 47



DANIA - 105

Shiny rose gold / Gloss blue tort



DANIA - 172

Shiny rose gold / Gloss rose horn / Gloss pink  
tort



DANIA - 195

Shiny bronze / Gloss gray snakeskin  
tort

# ESME

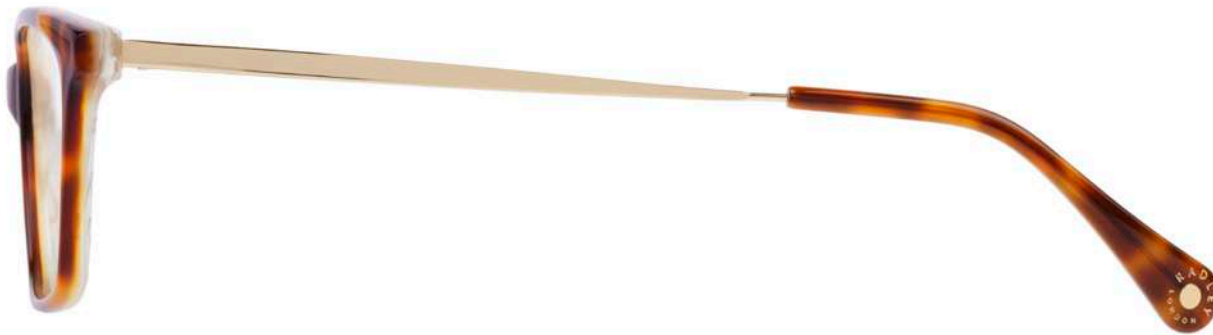
HANDCRAFTED ACETATE FRONT AND TIPS AND LUXURY TITANIUM  
TEMPLES.

---



- Handcrafted acetate front and tips
  - Luxury titanium temples
  - Full frame
  - Base curve: 4.5
- 

51 - 16 - 140 b: 33



ESME - 102

Gloss tort / bone / gold



ESME - 105

Gloss blue tort / blue



ESME - 162

Gloss burgundy horn / rose

# HENRIETTA

HANDCRAFTED ACETATE FRAME IN A CLASSIC FEMININE STYLE.

---



- Handmade acetate
  - Spring hinge
  - Dual color acetate temple laminations
  - Base curve: 4.5
- 

52 - 16 - 140 b: 32



HENRIETTA - 102

Gloss tort / Coral



HENRIETTA - 104

Gloss black tort / Lilac horn



HENRIETTA - 161

Gloss purple tort / Pink horn



# JAENA

A CLASSIC REIMAGINED WITH SOPHISTICATED LEATHER EFFECT TEXTURE  
TEMPLES AND HANDMADE ACETATE TIPS.

---



- Stainless steel rimwire
  - Hand crafted acetate tips
  - Leather effect temple inlay
  - Base curve: 4.5
- 

53 - 16 - 140 b: 36



JAENA - 001

Matte gold / Brown & green stripe



JAENA - 072

Shiny rose gold / Burgundy



JAENA - 261

Gloss purple / Pink

# JANELLA

BLOCKS OF PATTERN COMBINE WITH AUTUMN COLOR. SOPHISTICATION IN A CONFIDENTLY FEMININE SILHOUETTE.

---



JANELLA - 103

Gloss toffee crystal

JANELLA - 160

Gloss red tort / Bone

JANELLA - 188

Gloss teal



- Hand crafted acetate frame
  - Spring hinges
  - Full frame
  - Base curve: 4.5
- 

54 - 17 - 140 b: 41

# JANUARY

LIFT YOUR MOOD WITH A REFINED SCULPTURAL SHAPE, A FINE TWIST AT THE TEMPLE AND A POP OF SPARKLY COLOR.



- Flat sheet metal front
- Hand crafted acetate temples
- Full frame
- Base curve: 4.5

54 - 17 - 140 b: 40



JANUARY - 207

Gloss spruce teal / Shiny bronze / Tort



JANUARY - 260

Gloss red pepper / Shiny gold / Tort



JANUARY - 272

Shiny rose gold / Gloss black horn

# KADY

A COLORFUL, EASY TO WEAR BUTTERFLY SHAPE, FINISHED WITH CONFIDENT COLOR BLOCKING.

---



- Triple layered acetate front & laminated temples
  - Spring hinges
  - Full frame
  - Base curve: 4.5
- 

54 - 15 - 140 b: 42



KADY - 104

Gloss solid black / Rose / Grey tort



KADY - 161

Gloss solid purple / Teal / Pink tort



KADY - 162

Gloss Sangria / Purple / Red tort

# KAROLINA

ADD A POP OF COLOR TO YOUR DAY WITH BRIGHT LAMINATIONS TO A FLATTERING DEEP SHAPE .

---



- Handcrafted acetate frame
  - Spring hinges
  - Full frame
  - Base curve: 4.5
- 

53 - 19 - 140 b: 43



KAROLINA - 102

Gloss tort / Solid teal



KAROLINA - 104

Gloss black / Solid Burgundy



KAROLINA - 172

Gloss flamingo pink tort / Solid nude

# KEZIA

STYLISH AND FUNCTIONAL IN A PETITE FIT. A CLASSIC SILHOUETTE FEATURING FRONT CORNER LAMINATIONS.

---



- Hand crafted acetate frame
  - Stainless steel temples
  - Spring hinges
  - Base curve: 4.5
- 

49 - 13 - 135 b: 34



KEZIA - 103

Gloss toffee crystal / Purple



KEZIA - 160

Gloss red tort / Bone



KEZIA - 161

Gloss purple tort / Purple crystal

# MARCIE

THE PERFECT WAY TO GIVE YOUR DAY A WARDROBE CHIC FINISH.



MARCIE - 102  
Gloss brown horn / Gold



MARCIE - 161  
Gloss purple tort / Gold



MARCIE - 162  
Burgundy crystal / Rose gold



- Hand crafted acetate front
- Stainless steel temples
- Integral spring hinges
- Base curve: 4.5

50 - 17 - 135 b: 40

# MARGARET

NEW SEASON MUST-HAVES. A FEMININE EYESHape IN THE LATEST TREND FOR COMBINATION MATERIALS.

---



- Hand crafted acetate front
  - Stainless steel temples
  - Spring hinges
  - Base curve: 4.5
- 

51 - 16 - 140 b: 39



MARGARET - 102

Gloss tort / Burgundy



MARGARET - 104

Gloss black / Gold



MARGARET - 172

Gloss pink / Radley terrazzo print



# PORTIA

A BEAUTIFULLY BEVELLED CAT EYE SHAPE IN FASHIONABLE NUDE WITH BRIGHT COLOR POPS.

---



PORTIA - 102

Gloss tort / Red pepper / Nude



PORTIA - 118

Gloss crystal nude / Tort / Rose



- Hand crafted acetate frame
  - Dual front and temple laminations
  - Integral spring hinges
  - Base curve: 4.5
- 

53 - 16 - 140 b: 41

# ROBYN

AN ELEGANT SILHOUETTE WITH LUXURY JEWELRY DETAILING BRINGS DAY-TO-EVENING POISE AND POLISH.

---



- Hand crafted acetate frame
  - Spring Hinges
  - Base curve: 5.5
- 

53 - 15 - 140 b: 38



ROBYN - 104  
Gloss Black / Matte Gold



ROBYN - 107  
Gloss Nude / Teal Floral Tort / Gold



ROBYN - 161  
Gloss Purple / Lilac floral / Satin Silver

# ROMI

A UNIQUE TWIST ON A SOFT CAT EYE WITH DOUBLE LAYERS TO GIVE A 'FRAME IN FRAME' LOOK.

---



- Hand crafted acetate frame
  - Spring hinges
  - Full frame
  - Base curve: 4.5
- 

53 - 16 - 140 b: 38



ROMI - 102

Gloss brown / Tort crystal



ROMI - 161

Gloss purple tort / Wisteria purple



ROMI - 162

Gloss Burgundy / Pink crystal

# VANESSA

A BEAUTIFUL BUTTERFLY WITH JEWELRY TRIMS AND HAND-PAINTED COLOR FROM RADLEY'S AUTUMN PALETTE .

---



- Hand crafted acetate frame
  - Stainless steel temples
  - Cut-away lenses
  - Base curve: 4.5
- 

52 - 16 - 140 b: 40



VANESSA - 102

Gloss brown / Brick orange



VANESSA - 103

Gloss toffee crystal / Purple



VANESSA - 188

Gloss teal

# YOLANDE

EYEWEAR ACCESSORIES THAT HIT THE SWEET SPOT – A SLIM METALLIC DESIGN WITH LAYERED, TWO TONE COLORS

---



- Sheet stainless steel stepped front
  - Spring hinges
  - Full frame
  - Base curve: 4.5
- 

53 - 17 - 145 b: 39



YOLANDE - 004  
Matte black / Shiny gold

---



YOLANDE - 061  
Matte rose gold / Purple

---



YOLANDE - 062  
Matte Burgundy / Matte gold

---



*Sun*  
**COLLECTION**

ANNA ..... 23

ELSPETH ..... 24

FIA ..... 25

GENNA ..... 26

MORWENNA ..... 27

OTTOLINE ..... 28

PETULA ..... 29

SASHA ..... 30

TASSIA ..... 31

# ANNA

SWEET AND SOPHISTICATED. STAND-OUT COLOR STRIPES IN 70s INSPIRED HUES.

---



- Handmade acetate frame
  - 100% UVA & UVB protection
  - Base curve: 4.5
- 

54 - 18 - 140 b: 46

Sph's: +8.00 / -8.00

Cyl's: -4.00



ANNA - 150

Peach / Horn  
Solid brown



ANNA - 162

Gloss Burgundy / Grey / Green  
Solid smoke

# ELSPETH

BE INSPIRED BY VINTAGE FINDS WITH A CONFIDENT THICK-CUT FRAME  
EMBELLISHED WITH COLOR BLOCK AND LUXURY TRIMS.

---



- Chunky cut silhouette in a favorite cats-eye shape
  - Angled temple lamination 3D printed metallic bar
  - 100% UVA+B protection (UV400)
  - Base curve: 6 (suitable for prescription glazing)
- 

51 - 21 - 140 b: 47

Sph's: +8.00 / -8.00

Cyl's: 3.00



ELSPETH - 102

Gloss black / Tort  
Solid brown



ELSPETH - 104

Gloss black / Purple tort  
Smoke grad



ELSPETH - 107

Gloss teal  
Smoke grad



ELSPETH - 172

Gloss pink / Pink tort  
Solid brown



# FIA

STYLISH AND PRACTICAL. A BRITISH-DESIGNED FRAME WITH HANDMADE ELEMENTS – YOUR GO-TO SUMMER ACCESSORY.

---



- Classic petite wayfarer shape
  - Angled temple lamination 3D printed metallic bar
  - 100% UVA+B protection (UV400)
  - Base curve: 6 (suitable for prescription glazing)
- 

51 - 18 - 140 b: 38

Sph's: +8.00 / -8.00

Cyl's: 3.00



FIA - 103

Gloss brown / Tort  
Solid brown



FIA - 104

Gloss black / Purple tort  
Smoke grad



FIA - 172

Gloss pink / Pink tort  
Solid brown

# GENNA

THIS SEASON'S SILHOUETTE IS A FAVORITE CATS-EYE SHAPE WITH GLAMOROUS METALLIC SIDES FOR THE FINISHING TOUCH.

---



- Effortlessly glamorous on trend cat eye shape
  - Combination frame
  - 100% UVA+B protection (UV400)
  - Base curve: 6 (suitable for prescription glazing)
- 

55 - 14 - 140 b: 45

Sph's: +8.00 / -8.00

Cyl's: 2.00



GENNA - 104

Gloss black / Tort - Rose gold  
Smoke grad



GENNA - 106

Gloss navy / Brown crystal - Shiny gold  
Brown grad



GENNA - 107

Gloss green crystal / Matte gray  
Solid green



GENNA - 172

Gloss pink crystal / Matte teal  
Brown grad

# MORWENNA

STAND OUT IN 70'S-INSPIRED COLOR BLOCKS WITH LUSTROUS METALLIC TRIMS.

---



MORWENNA - 103

Gloss camel / Burgundy - Shiny gold  
Brown grad



MORWENNA - 104

Gloss solid black / Shiny gold  
Smoke grad



MORWENNA - 107

Gloss green crystal / Blue - Shiny rose gold  
Brown grad

- 
- Oversized silhouette in color pops
  - Metallic jewelry detailing
  - 100% UVA+B protection (UV400)
  - Base curve: 6 (suitable for prescription glazing)
- 

57 - 17 - 140 b: 51

Sph's: +8.00 / -8.00

Cyl's: 3.00

# OTTOLINE

GET THAT HOLIDAY FEELING WITH SOPHISTICATED METAL TONES LAYERED WITH TORTOISESHELL.

---



- Super slim shape with metal brow bar detailing
  - PC frame, metal and handmade acetate tips
  - 100% UVA+B protection (UV400)
  - Base curve: 6 (suitable for prescription glazing)
- 

54 - 18 - 140 b: 48

Sph's: +8.00 / -8.00

Cyl's: 3.00



OTTOLINE - 102

Gloss tort - Gold  
Solid green



OTTOLINE - 104

Gloss black / Pink tort - Rose gold  
Smoke grad



OTTOLINE - 161

Gloss solid purple / Lilac  
Brown grad

# PETULA

NEW SEASON AVIATOR, A FEMININE SILHOUETTE IN HIGH-POLISH ROSE GOLD.

---



- 
- Rimwire and acetate frame
  - Silicone adjustable nosepads
  - 100% UVA+B protection (UV400)
  - Base curve: 6 (suitable for prescription glazing)
- 

60 - 16 - 140 b: 52

Sph's: +8.00 / -8.00

Cyl's: 4.00

---

PETULA - 201

Shiny gold / White tort  
Purple grad

# SASHA

TEAM HIGH-GLOSS FRONTS WITH METALLICS FOR POLISHED GLAMOUR.

---



- Classic, easy to wear shape
  - Sophisticated leather inlay temples
  - 100% UVA+B protection (UV400)
  - Base curve: 6 (suitable for prescription glazing)
- 

55 - 19 - 140 b: 44

Sph's: +8.00 / -8.00

Cyl's: 2.00



SASHA - 103

Gloss camel / Teal - Shiny gold  
Brown grad



SASHA - 107

Gloss turquoise crystal / Grey - Shiny silver  
Solid smoke



SASHA - 162

Gloss Burgundy crystal / Brown - Shiny gold  
Smoke grad

# TASSIA

METALLICS AND SOFT OPAQUE CRYSTALS COMBINE FOR THE PERFECT AMOUNT OF SHINE.

---



- 
- PC with metal temples and handmade acetate tips
  - 100% UVA+B protection (UV400)
  - Base curve: 6 (suitable for prescription glazing)
- 

55 - 16 - 137 b: 45

Sph's: +8.00 / -8.00

Cyl's: 4.00

---

TASSIA - 172

Gloss pink crystal  
Brown grad

Distributed by

CLASSIQUE  
EYEWEAR

[sales@classique-eyewear.com](mailto:sales@classique-eyewear.com)

Toll Free: (866) 604-5700

[classique-eyewear.com](http://classique-eyewear.com)